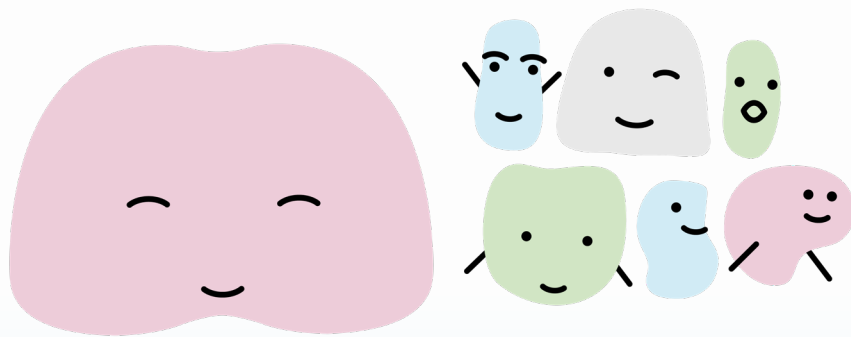


Fun for  
children of  
all ages!

# VIRTUAL MINI MUSE



Art Activity

Inspiration for your imagination  
Haitian Metal Art  
featured in *Cosmic Mirrors*

# NSU ART MUSEUM FORT LAUDERDALE

## Haitian Metal Art featured in *Cosmic Mirrors*

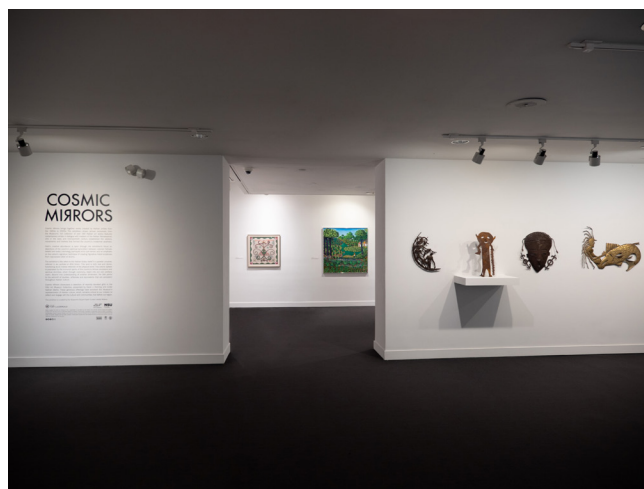
*Cosmic Mirrors* brings together striking works created by Haitian artists from the 1950s to 2000s. The exhibition – drawn almost exclusively from the Museum's rich collection of over 160 Haitian art works – features contemporary artists in dialogue with masters of the Haitian Renaissance, who in the early and mid-twentieth century established the ateliers, movements and markets that formed the country's modernist aesthetic.

Haiti's creative abundance is seen through the exhibitions focus on depictions of the country's spiritual syncretism between colonial Catholic beliefs and vodou cosmology, portrayals of its lush terrain, and an emphasis on the nation's signature technique of creating figurative metal sculptures from repurposed steel oil drums.

The exhibition's title refers to the Haitian Vodou belief in a parallel universe, referred to as Lavaloka or Afrik Ginen. This land is both real and divine, functioning as an inverse reflection of the physical world. This cosmic sphere is populated by the immortal spirits of the country's African ancestors and spiritual divinities, which through ceremony, reach into our own profane realm. Beyond this understanding of another dimension, the title points to the leitmotif of doubles, reflexives and equivalents that are persistent throughout Haitian culture.

### Art Vocabulary

- **Sculpture** - An art form made in three dimensions. Sculptures can be made by carving, modelling, or placing materials together.
- **Relief** - An artwork that projects out from a background surface.
- **Low relief** - The design projects only slightly from the ground and there is little or no undercutting of outlines.
- **High relief** - The design projects drastically from the surface and some parts may be undercut and detached.
- **Embossing** - Is the process of creating a raised image, design, or text on a material, such as paper, leather, or metal sheets
- **Positive space** - The main object or subject within a composition.
- **Negative space** - The area surrounding the main object or subject.
- **Organic shape** - Irregular and uneven shapes, shapes we would see in nature
- **Geometric shape** - Precise and regular shapes, like squares, rectangles, and triangles



Installation view of *Cosmic Mirrors*.

# Haitian Metal Art

## Inspired by Serge Jolimeau

Create a low relief sculpture inspired by the artwork of Serge Jolimeau.

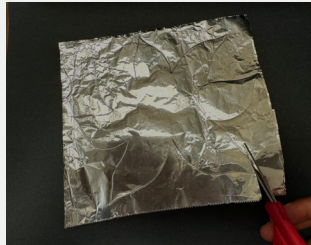
1



Your materials are:

- Aluminum Foil
- Black Paper
- Scissors
- Glue
- Chopstick

2



Take your aluminum foil and cut out a design, it can be an organic shape or geometric shape.

3



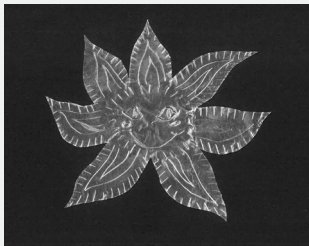
After cutting a shape from the aluminum foil, carefully add glue to the back and attach it to your black paper.

4



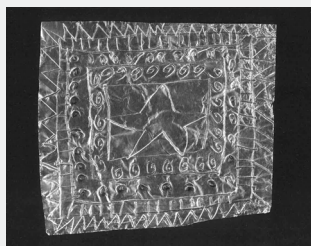
After attaching your aluminum foil design to your paper, take a chopstick and begin drawing/imprinting a design into the aluminum foil.

5



Here is your completed Haitian Metal Art inspired by Serge Jolimeau.

6



Here is another example of your completed Haitian Metal Art inspired by Serge Jolimeau.

Thank you for joining us, don't forget to snap a photo of you and your artwork!  
Tag us @nsuarmuseum

### Free Admission Days

Fort Lauderdale Neighbor Day

Every LAST Sunday of every month, Fort Lauderdale residents receive FREE admission to NSU Art Museum as part of Fort Lauderdale Neighbor Days.

---

### Sunny Days/ Starry Nights: Free First Thursdays

Enjoy FREE Museum admission and 2-for-1 All Day Happy Hour on the first Thursday of every month from 11 AM to 7 PM.

---

### Bank of America, Museums on Us

First full weekend of each month, Bank of America card required for free entry.

---

### Visit

Museum Hours:

Sunday: Noon - 5 PM

Tuesday-Saturday: 11 AM - 5 PM

Mondays: Closed

Alex Proimos from Sydney, Australia, CC BY 2.0 <<https://creativecommons.org/licenses/by/2.0/>>, via Wikimedia Commons

### NSU Art Museum Fort Lauderdale

    @nsuartmuseum

[nsuartmuseum.org](http://nsuartmuseum.org) | 954-525-5500

One East Las Olas Boulevard, Fort Lauderdale, FL 33301 

Major support for exhibitions and programs at NSU Art Museum Fort Lauderdale is provided by the David and Francie Horvitz Family Foundation Endowment, the City of Fort Lauderdale, Wege Foundation, Community Foundation of Broward, Lillian S. Wells Foundation, the Broward County Cultural Division, the Cultural Council, the Broward County Board of County Commissioners, the State of Florida through the Division of Arts and Culture and the National Endowment for the Arts, Spirit Charitable Foundation, Fosco Family Foundation and the Moss Foundation. NSU Art Museum Fort Lauderdale is accredited by the American Association of Museums.