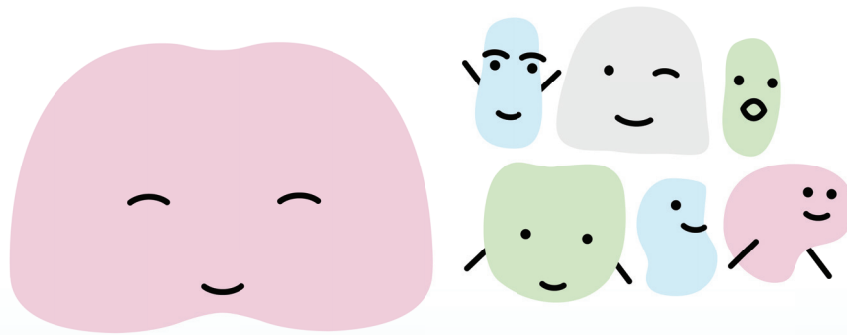


Fun for
children of
all ages!

VIRTUAL MINI MUSE



Art Activity

Inspiration for your imagination
Pablo Picasso Ceramics featured in
From Dust You Are, To Dust You Return

NSU ART MUSEUM FORT LAUDERDALE

Pablo Picasso Ceramics featured in *From Dust You Are, To Dust You Return*

Our exhibition of ceramics by Pablo Picasso (1881-1973) are drawn exclusively from NSU Art Museum's collection, is presented on the 50th anniversary of the artist's death. Picasso's early 20th-century cubist paintings revolutionized modern painting. A prolific artist, he produced over 50,000 works in a variety of mediums, including drawing, printmaking and sculpture. Although Spanish-born, he made France his home. Following World War II he met Suzanne and Georges Ramie, the owners of the renowned Madura ceramic workshop in Vallauris, a small seaside town located in the South of France. He became so enthralled with the ceramic medium that he moved to Vallauris in 1947, and remained there until 1955. He continued to experiment with the clay medium for the next 25 years, producing thousands of original and editioned vessels, bowls, and plaques that he transformed into all kinds of beasts and mythological creatures. Inspired by his experience with lithography, Picasso was excited by the possibility of creating ceramic multiples that would enable him to share his vision with a wider audience. This populist sentiment connected him with the artisans he worked with at the factory. He identified with their sense of purpose and the satisfaction they derived from their craft.

Art Vocabulary

- **Kneading** - The process of massaging or squeezing clay with the hands.
- **Vessel** - A hollow container.
- **Hand-building** - The construction process of ceramics that does not involve a wheel. These techniques include pinching, coiling, or slab-building that clay.
- **Objective** - An adjective to describe the subjects of an artwork if it depicts something recognizable and existent in our real world.
- **Figurative** - Related to the human figure or body.
- **Sculpture** - Three-Dimensional Artwork
- **Three-Dimensional** - when all three dimensions-- length, height, and width-- can be touched and seen.



Installation view of Pablo Picasso: *From Dust You Are, To Dust You Return*, 2023. Courtesy of NSU Art Museum

Fiber Mandala

Inspired by Pablo Picasso

Create an Abstract Figurative Vessel

1



Your materials are:

- model magic
- cardboard
- paper goods
- scissors
- markers

2



First, choose a color to draw with marker on your clay and mix the clay around.

3



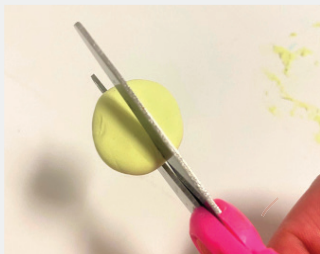
Make a base out of model magic using a tube as a cookie cutter.

4



Flatten a larger piece of colored clay and wrap it around your base. Push the two pieces together so they stick.

5



Turn your pot into a face or animal by adding small features. Use scissors to cut the clay into shapes.

6



Add your features on by pressing the clay pieces softly together. Be careful not to smush your creation!

7



Keep adding to your piece until you are happy. Grab a marker and draw on your clay.

8



Enjoy your new artwork!

**Thank you for joining us, dont forget to snap a photo of you and your artwork!
Tag us @nsuuseum**

Free Admission Days

Fort Lauderdale Neighbor Day

Every LAST Sunday of every month, Fort Lauderdale residents receive FREE admission to NSU Art Museum as part of Fort Lauderdale Neighbor Days.

Sunny Days/ Starry Nights: Free First Thursdays

Enjoy FREE Museum admission and 2-for-1 All Day Happy Hour on the first Thursday of every month from 11 AM to 7 PM.

Bank of America, Museums on Us

First full weekend of each month, Bank of America card required for free entry.

Visit

Museum Hours:

Sunday: Noon - 5 PM

Tuesday-Saturday: 11 AM - 5 PM

Mondays: Closed

NSU Art Museum Fort Lauderdale

    @nsuartmuseum

nsuartmuseum.org | 954-525-5500

One East Las Olas Boulevard, Fort Lauderdale, FL 33301 

Major support for exhibitions and programs at NSU Art Museum Fort Lauderdale is provided by the David and Francie Horvitz Family Foundation Endowment, the City of Fort Lauderdale, Wege Foundation, Community Foundation of Broward, Lillian S. Wells Foundation, the Broward County Cultural Division, the Cultural Council, the Broward County Board of County Commissioners, the State of Florida through the Division of Arts and Culture and the National Endowment for the Arts, Spirit Charitable Foundation, Fosco Family Foundation and the Moss Foundation. NSU Art Museum Fort Lauderdale is accredited by the American Association of Museums.