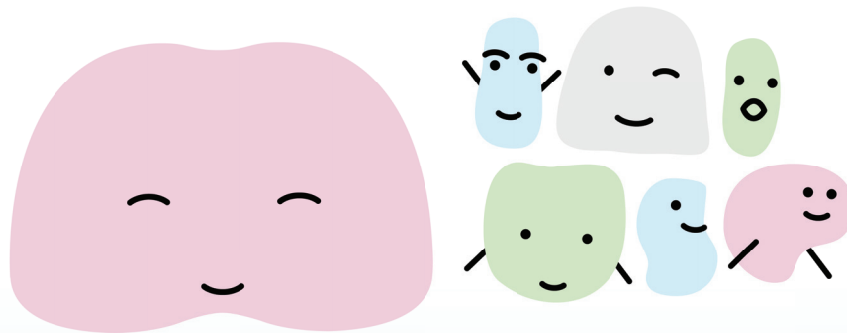


Fun for  
children of  
all ages!

# VIRTUAL MINI MUSE



Art Activity

Inspiration for your imagination  
Nathalie Alfonso: *LineScape Dusk*  
featured in *Future Past Perfect*

# NSU ART MUSEUM FORT LAUDERDALE

## ***Nathalie Alfonso: LineScape Dusk*** **featured in *Future Past Perfect***

The site-specific installation, *LineScape Dusk*, which Nathalie Alfonso (b. 1987, Bogota, Colombia; lives and works in Coral Springs, FL) composed on a single 26-foot wall in the museum will cease to exist following the exhibition's closure. This ephemeral project is informed by Alfonso's conceptualization of artmaking as a matter of physical endurance, an action-based performance hidden from public view. The laborious task of executing this large-scale drawing fully engaged the movement of the artist's body, making it an essential part of the work itself. *LineScape Dusk* is reminiscent of the vast expanses of Impressionist artist Claude Monet's *Water Lilies* series of paintings. Alfonso's composition implements Monet's similar exploration of the horizon line by pushing it to the physical limits of the gallery space. The soft pastel palette of Alfonso's installation marks a recent departure for the artist who previously worked primarily in monochrome. Although *LineScape Dusk* is abstract, it was inspired by Alfonso's engagement with South Florida's natural wonder, the Everglades.

### **Art Vocabulary**

- **Conceptualism** - Artwork where the idea or concept behind the work is more important than the finished, physical object created.
- **Composition** - The arrangement of the forms and subjects in a work of art.
- **Soft Pastel** - The material Nathalie Alfonso uses in her installation. They are loose, dry sticks made out of pigment and chalk and brush away from the applied surface without a varnish or fixative
- **Horizon** - The invisible line your eye perceives across the furthest edge of the earth. It is level with the viewer's eye and determines how 3D subjects get translated into a 2D work. The Horizon line is subject found in many artworks across time.
- **Landscape** - A depiction of natural scenery such as mountains, valleys, rivers, and forests, especially where the main subject is a wide view—with its elements arranged into a coherent composition.
- **Abstract** - A style of depiction where the artwork conveys a subject from reality without being the accuracy in our visual world. Abstraction is often expressed in shape, color, form, and mark-making.
- **Installation** - An artistic medium in which a room or space is designed by an artist. Installations are often huge artworks that blur the space of viewing with the artwork itself.



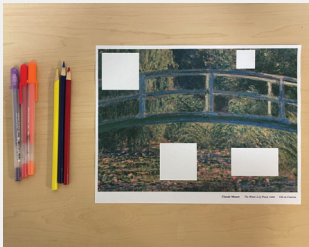
Installation view of Nathalie Alfonso: *LineScape Dusk*, 2023 featured in *Future Past Perfect*

# Artwork Addition

## Inspired by Nathalie Alfonso

Complete the artwork by filling in the blank spaces and making your own unique additions inspired by Nathalie Alfonso.

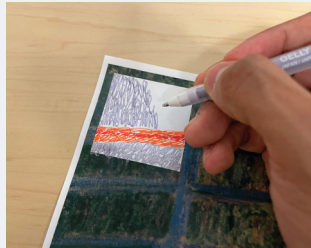
1



Gather your materials:

- Print Out of Digital template image (page 4 of this document)
- Gel Pens
- Colored Pencils
- Covering for your work surface

2



Select an artwork, and use your pens or colored pencils to fill in the blank spaces. Use your own creativity and imagination!

3



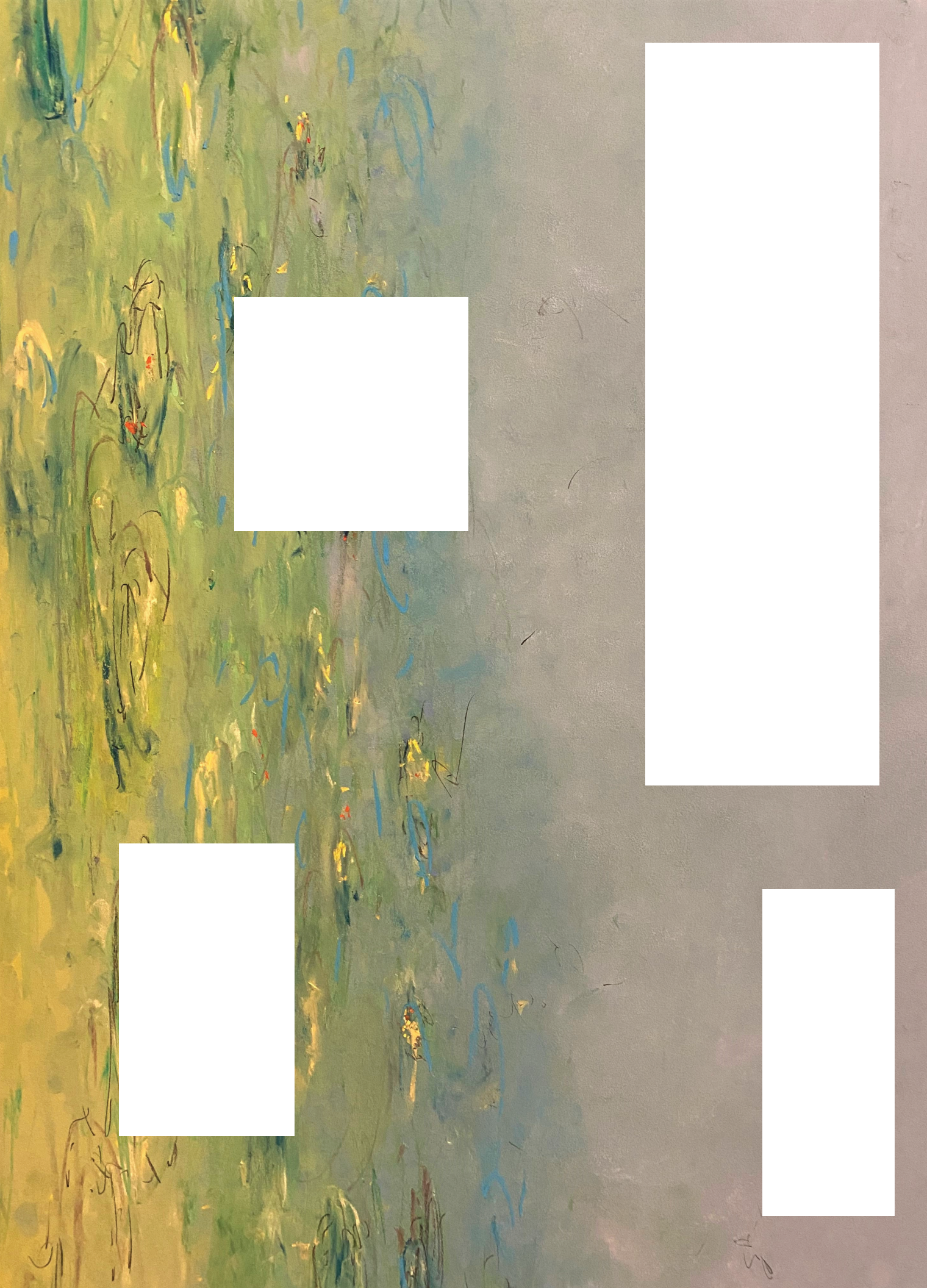
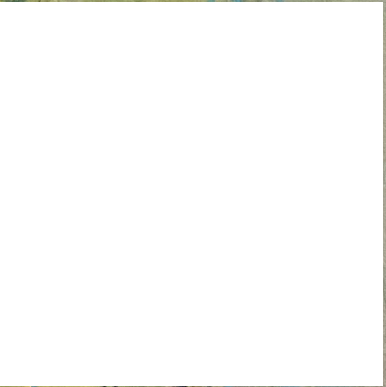
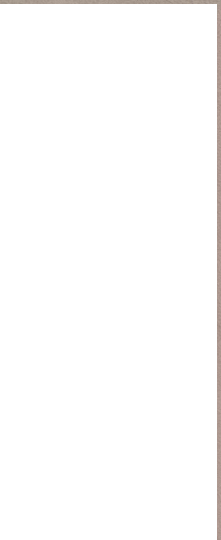
Try to replicate the original artwork in the blank spaces, or create your own addition.

4



Repeat until finished. Next time, try experimenting with different materials like soft pastel, markers, or charcoal.

Thank you for joining us, dont forget to snap a photo of you and your artwork!  
Tag us @nsuartmuseum



## Free Admission Days

### Fort Lauderdale Neighbor Day

Every LAST Sunday of every month, Fort Lauderdale residents receive FREE admission to NSU Art Museum as part of Fort Lauderdale Neighbor Days.

---

### Sunny Days/ Starry Nights: Free First Thursdays

Enjoy FREE Museum admission and 2-for-1 All Day Happy Hour on the first Thursday of every month from 11 AM to 7 PM.

---

### Bank of America, Museums on Us

First full weekend of each month, Bank of America card required for free entry.

---

## Visit

Museum Hours:

Sunday: Noon - 5 PM


Tuesday-Saturday: 11 AM - 5 PM

Mondays: Closed

## NSU Art Museum Fort Lauderdale

    @nsuartmuseum

nsuartmuseum.org | 954-525-5500

One East Las Olas Boulevard, Fort Lauderdale, FL 33301 

Major support for exhibitions and programs at NSU Art Museum Fort Lauderdale is provided by the David and Francie Horvitz Family Foundation Endowment, the City of Fort Lauderdale, Wege Foundation, Community Foundation of Broward, Lillian S. Wells Foundation, the Broward County Cultural Division, the Cultural Council, the Broward County Board of County Commissioners, the State of Florida through the Division of Arts and Culture and the National Endowment for the Arts, Spirit Charitable Foundation, Fosco Family Foundation and the Moss Foundation. NSU Art Museum Fort Lauderdale is accredited by the American Association of Museums.